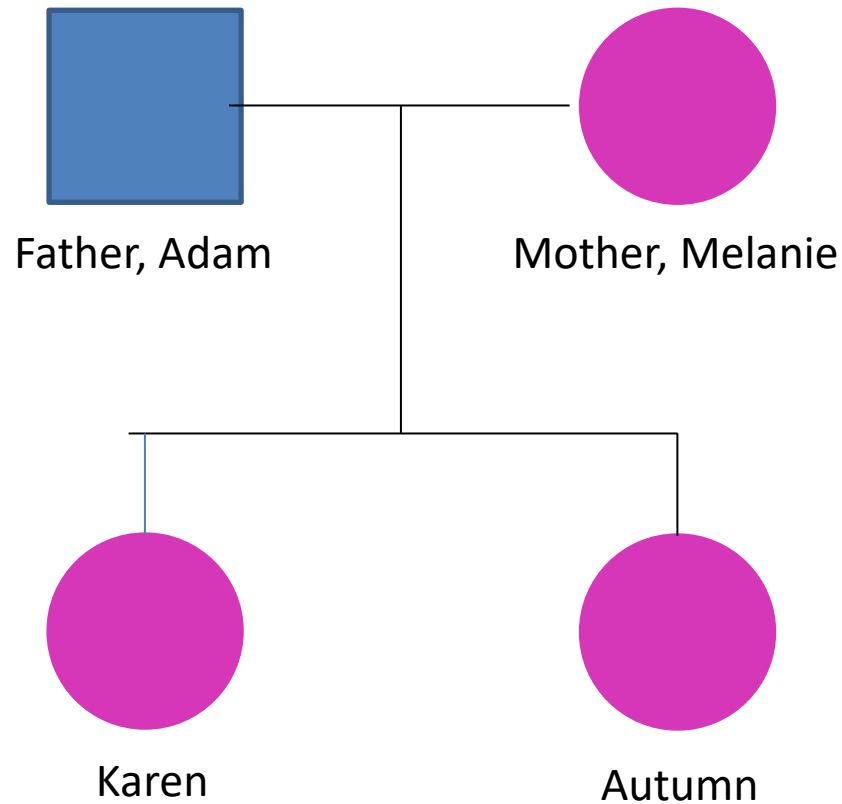


Case Presentation

By Paula Culley

The family (anonymised)



Referral received as follows:

- Repeat and ongoing concerns for Autumn and her mental health.
- Most recently Autumn has been found to have lacerations to her chest and having made an attempt to take her own life by hanging using a noose created from an electrical cable. Autumn is reported to be cutting herself to such an extreme that most of her body, seen by school, is covered in lacerations. She also burns her skin with lighters and aerosol cans.
- There is also a concern regarding emotional impact on her sister, Karen.
- Parents have also not sought medical attention when advised to do so.
- Autumn is telling school that she wants to die.

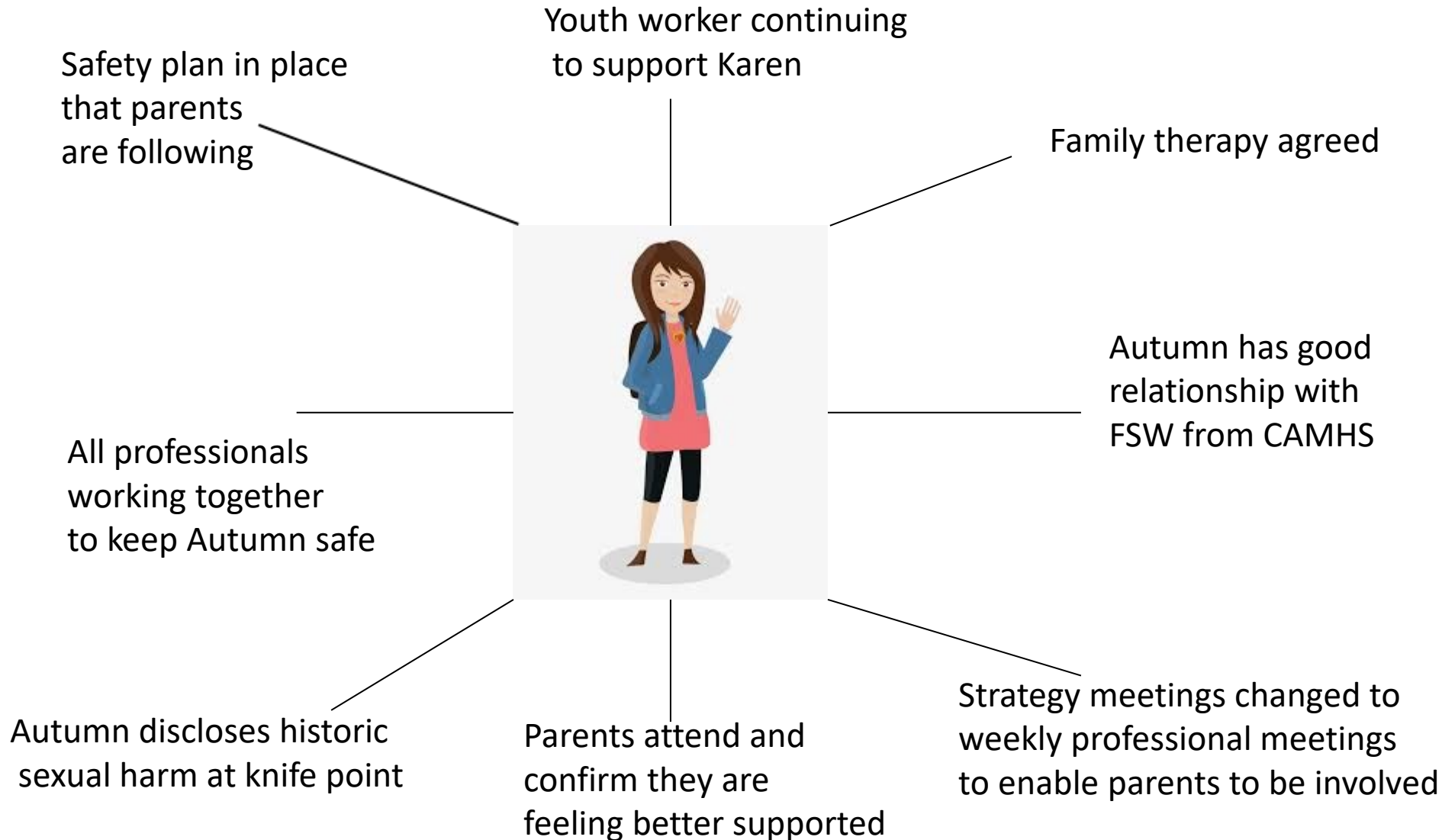
Strategy meeting held:

- 13 professionals attended including: Police; Early Help; school; Head of Service for CS and Early Help; Service Lead for Education; Youth Service; health service and CAMHS, including Service manager.
- Emotions high as everyone had concerns for Autumn, however, CAMHS clear that she did not meet threshold for becoming an inpatient as they felt the issue was emotional dysregulation.
- Clear everyone trying hard to protect Autumn but not working together as a collective.

Immediate Plan:

- Review Strategy meetings weekly
- CAMHS: FSW to support Autumn whilst awaiting transfer to longer term support with emergency support from Rapid Response; explore DBT for Autumn and family therapy and discuss further at MDT meeting.
- CAMHS FSW and SW to visit family together to complete safety planning prior to Autumn's discharge.
- Plan to be shared with hospital and school to enable them to monitor and flag concerns immediately to the social worker
- Police to flag address with LPA Safeguarding Team to consider a briefing to officers
- School – continue with one to one support and sending Autumn home if concerns high
- Youth services to work with Karen to ensure she felt supported
- FGC to be convened to identify family/friends support
- EH to continue supporting the parents due to having a good relationship with the worker.
- School nurse – complete physical health checks of Autumn

Case review after 2 weeks:



Impact of multi- professional working:

All working to the same
end goal

Everyone understands
each others role

Open communication

All aware of current risk
and plan to protect

Parents/young person
receive the same
message from each
professional preventing
confusion

Voluntary sector:

- Whilst this case did not use the voluntary sector there are many occasions in which our team are reliant on them for support, such as carpet; beds; clothing; toys; baby equipment and without their support the funds would need to be met by CS thus, a reduction in resources available for other essential areas.